

# Stowmarket Monitor Farm

## Meeting 10: Harvest Management & Marketing Practice

5 February 2016

Wyverstone Village Hall, Stowmarket

Mark Ineson, Harry Henderson, Dhan Bhandari, Jeremy Cole

For more information, visit: [cereals.ahdb.org.uk/Stowmarket](http://cereals.ahdb.org.uk/Stowmarket)



**Brian Barker**

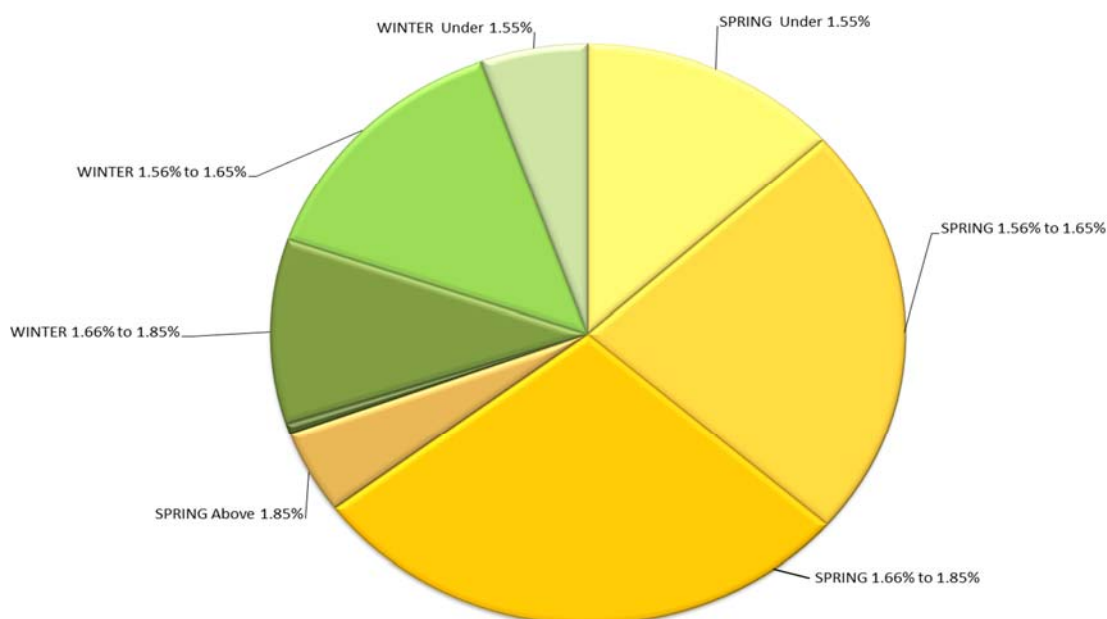
## Meeting summary

- Malting barley market
- Harvest logistics
- Combine choice
- Grain storage
- Grain marketing



## Maltsters' Wish List 2016

### Southern & Eastern England



## Harvest logistics – key issues

Labour & machinery	Property	Cropping
Trailers vs combine	Storage type & age	Yields
Controlled Traffic	Storage capacity	Straw – bale or chop?
Health & Safety	Drying capacity	Rotation
Reliability & back-up	Farm & yard layout	Varieties
Staff vs contractor - losses	Gateway size	Weather
Working hours	Road network	End markets

## Combine choice

The best option for any given farming system depends on:

Farm type	Machinery policy
Crop types & areas	Carting, drying & storing system
Labour – quality & quantity	Technology use, e.g. CTF, guidance, etc.
Average yields	Speed vs losses
Available harvest days / hours	Tracks vs wheels
Field, gateway & road size	Preferred header size & type
Soil type & condition	Bale or chop straw?
Farm size & layout	Cost & availability of contractors

## Grain storage

- Safe effective grain storage is key to ensuring milling & malting quality and minimising loss of premiums through claims and rejections.
- The AHDB Grain Storage Guide can help storekeepers prevent grain spoilage and maintain quality. It provides guidance on identifying and managing food-borne safety risks associated with insects, mites, fungi and mycotoxins.
- AHDB Safe Storage Time Calculator will help to identify grain in most urgent need of attention.

## Next meetings

Friday 10 June  
2016

Farm Walk / Open Day at Lodge Farm, Westhorpe

- To attend the meetings, please contact your AHDB Cereals & Oilseeds Regional Manager: Tim Isaac [tim.isaac@ahdb.org.uk](mailto:tim.isaac@ahdb.org.uk) 07964 975078
- To find out more about AHDB's CropBench+ benchmarking tool, please contact: Holly Howsam [holly.howsam@ahdb.org.uk](mailto:holly.howsam@ahdb.org.uk) 07767 001543

*While the Agriculture and Horticulture Development Board seeks to ensure that the information contained within this document is accurate at the time of printing, no warranty is given in respect thereof and, to the maximum extent permitted by law, the Agriculture and Horticulture Development Board accepts no liability for loss, damage or injury howsoever caused (including that caused by negligence) or suffered directly or indirectly in relation to information and opinions contained in or omitted from this document. Reference herein to trade names and proprietary products without stating that they are protected does not imply that they may be regarded as unprotected and thus free for general use. No endorsement of named products is intended, nor is any criticism implied of other alternative, but unnamed products.*